



HONG KONG 2050 IS NOW

POLICY RECOMMENDATION FOR
LONG TERM DECARBONISATION
STRATEGY

9th SEP 2019

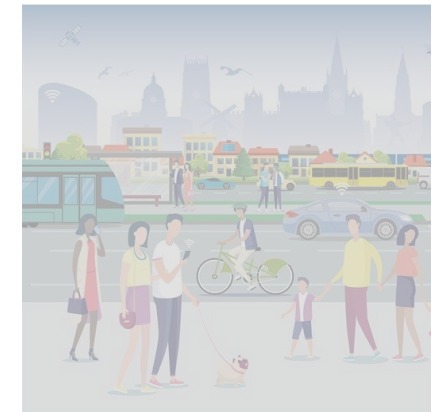
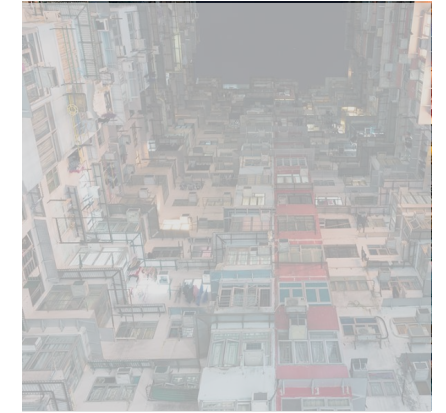
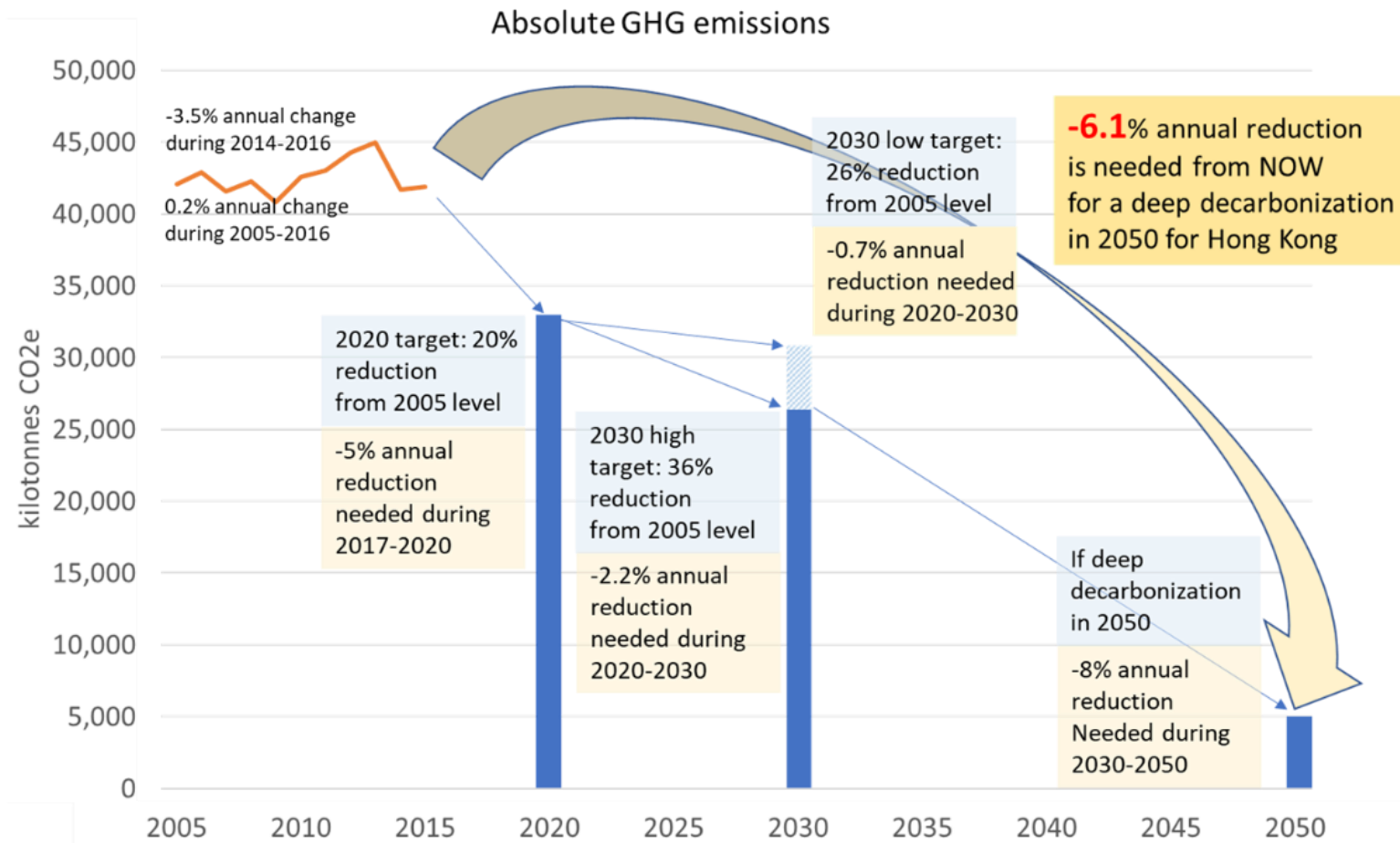
 思匯
CIVIC EXCHANGE

 WORLD
RESOURCES
INSTITUTE

KEY FEEDBACK AREA



HOW WE ARE LAGGING BEHIND 2030 & HOW MUCH MORE WE NEED TO DO FOR 2050



MASSIVE RAMP-UP OF RENEWABLE ENERGY

Significantly increase the share of RE in the energy mix

Import more nuclear energy from China

Deploy Natural Gas with Carbon Capture and Storage (CCS)

Demand Response



An aerial photograph of Hong Kong, showing a dense urban landscape with numerous skyscrapers and residential buildings. The city is situated on a peninsula, with the Victoria Harbour in the foreground and mountains in the background. The sky is clear and blue.

TO REDUCE ENERGY CONSUMPTION IN NEW AND EXISTING BUILDINGS IN HONG KONG

Join in voluntary initiatives to set target and improve performance

- Science Based Target (SBT), a global initiative, now with 624 companies joined in and taken action.
- HKGBC's "ACT Shop" programme, pilot programme to implement the retro-commissioning.
- Local initiate Energy Charter

Start from retro-commissioning to exploring new retrofit opportunities

WHAT CAN GOVERNMENT DO MORE TO PROMOTE ENERGY EFFICIENCY IN NEW AND EXISTING BUILDINGS?

Target setting and periodic performance tracking

Policies and regulations progressively tightened

Reforming the GFA Concession for 'Green' features

Reasonable town planning to control the building area increase

Improving energy audit



Empowering the HKGBC to add a 'BEAM+ Energy Star' measure to its existing ratings



PROMOTING THE WIDER USE OF GREEN AND INNOVATIVE TRANSPORT TECHNOLOGIES

Short-term recommendations

Review and restructure the licence fee structure

Reintroduce a strong economic incentive for one to one car replacement

Long-term recommendations

Actively search for emerging technology and design a long-term technology roadmap

Focus on making EV taxi and mini-bus economical

Motivate a shift from private car ownership to use of car fleets or Uber-type services

BANNING FOSSIL FUEL VEHICLES IN HONG KONG AND WAYS FORWARD

Establish robust targets to adopt zero emission vehicle and corresponding pathways

Set a more proactive target and consider banning vehicles powered by traditional fuels

Improve charging facilities and establish a coverage target

WAYS



FORWARD

Establish congestion pricing in Central district immediately

Incorporate a mandatory fleet-wide average carbon dioxide standard into APCO or relevant legislation

HOW WOULD THE GOVERNMENT / THE PUBLIC SECTOR MOTIVATE YOU AS AN INDIVIDUAL TO PRACTISE LOW-CARBON LIFESTYLE?

Choice influencing involves adding elements of behavioural science into policy-making

Improve Govt promotion effort in a multi-pronged strategy that covers information provision, labelling, feedback, and action plans

Eliminate or restrict choices from the market through regulations, tax incentives and market-based financial disincentives

Enhance communication measures that promote and educate sustainable habits in daily life



LAST BUT NOT LATEST

Explore options for implementing a price on carbon emissions

Set net zero emissions/deep decarbonization vision for HK by 2050 and update more ambitious targets for 2030

Assist in the establishment of a Monitoring, Reporting and Verification (MRV) system for international shipping and aviation.

Encourage people to reduce their international travel-related carbon footprint

HONG
KONG
2050
IS NOW

T O D A Y

HONG
KONG
2050
IS NOW